



Welcome to the Fort Peck Tribe's Bison Rail facility operated by WEI Transload and strategically located in NE Montana in close proximity to Canada to the north and the Bakken Oil Field to the east.

About WEI Transload

- WEI Transload management in business for more than 40 years
- Located on the main US HWY 2 East-West Corridor
- Canadian access through the Port of Scobey (75 miles via MT 13) and Port of Raymond (95 miles via MT 16)

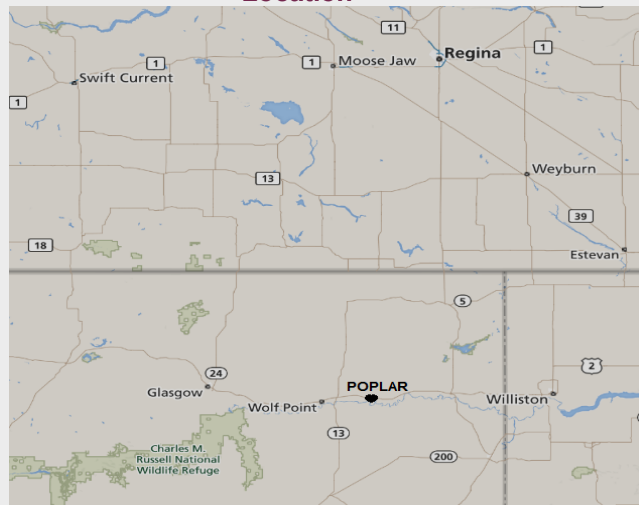
Our Services

- Professional full service Rail/Truck transload
- Secure storage in our warehousing and inventory facilities.
- Drill pipe and casing, frac sand, CO2, pulse crops, lumber products
- Rail car storage on private track

Our Facilities

- Industrial park in Poplar, Montana, boasts over 2600 feet of Burlington Northern-serviced spur
- 22 car capacity for storing and unloading rail cars
- Two large laydown yards and track side docks
- Over 65,000 square feet of indoor heated warehouse space
- 150,000 square feet of secure outdoor storage
- Willing to customize grain storage for selected customers

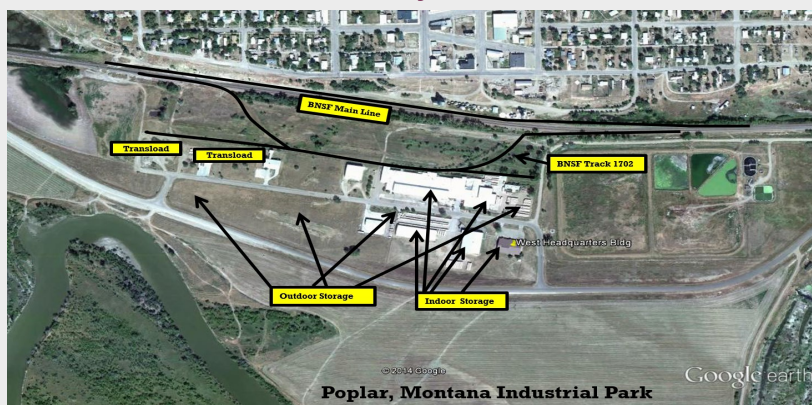
Location



Dock & Storage Facilities ~ 200,000 square feet



Track Lay Out



Contact Info: Tom Lipko, WEI Transload
Office: 100 Industrial Park, Poplar, MT 59255

Facility: Poplar, Montana **email:** weitel@nemont.net
Cell: (406) 471-0475 **Tel:** (406) 768-5511 x201